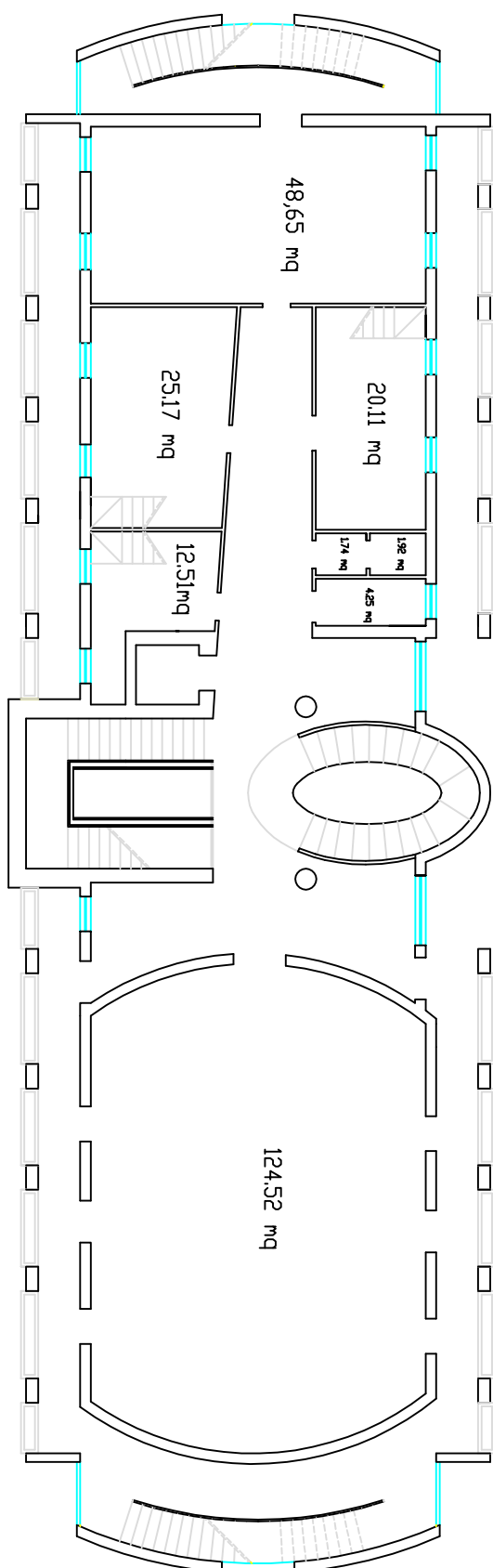


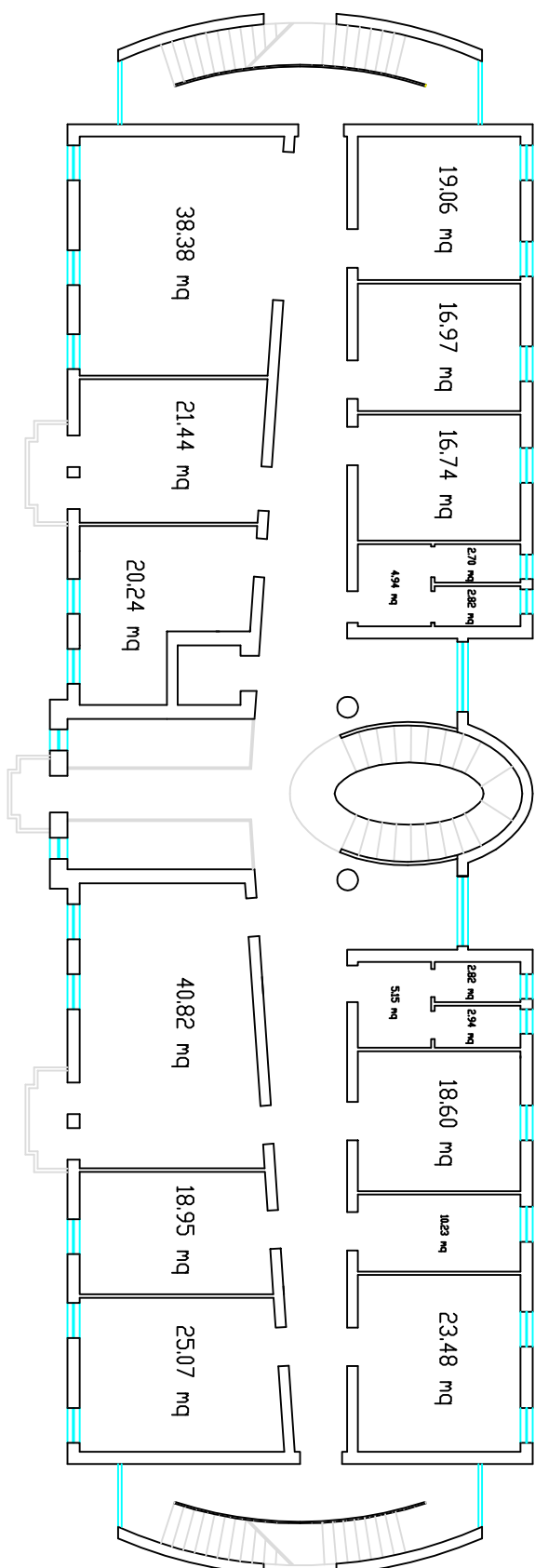
PULIZIE GIORNALIERE UFFICI SITI IN PIAZZA CICERUACCHIO

MUNICIPIO

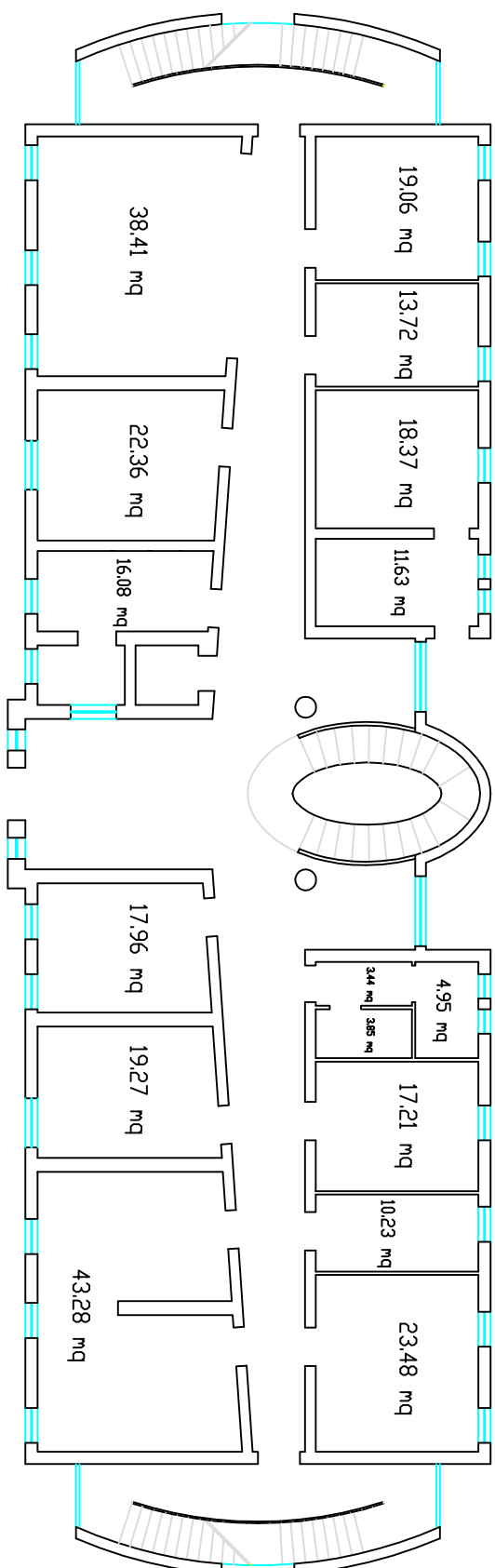
PIANO SECONDO sup. NETTA = 358,28 mq.



PIANO PRIMO sup. NETTA = 405,62 mq.



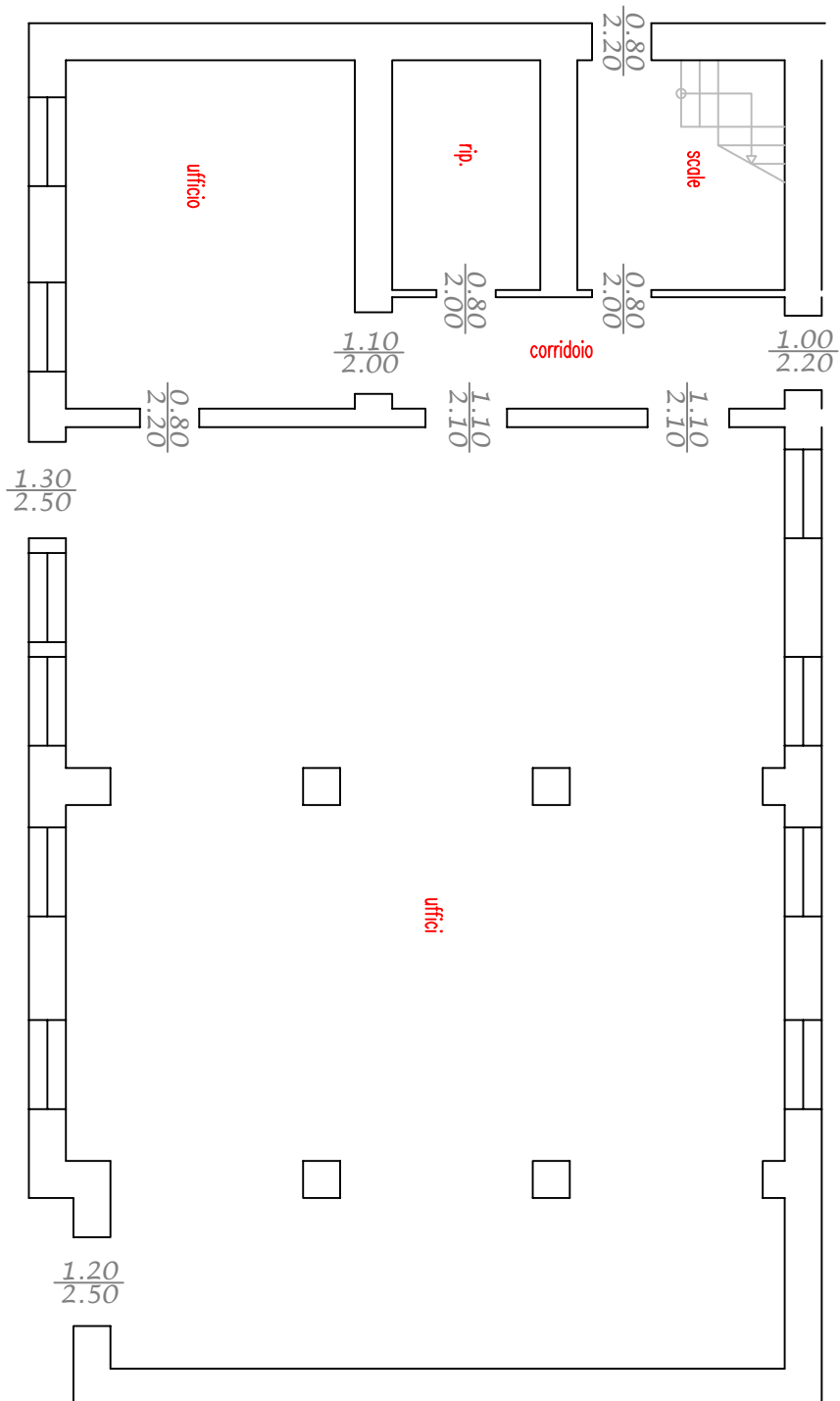
PIANO TERRA sup. NETTA = 414,32 mq.



TOTALE MUNICIPIO sup. NETTA = 1.178,22 mq.

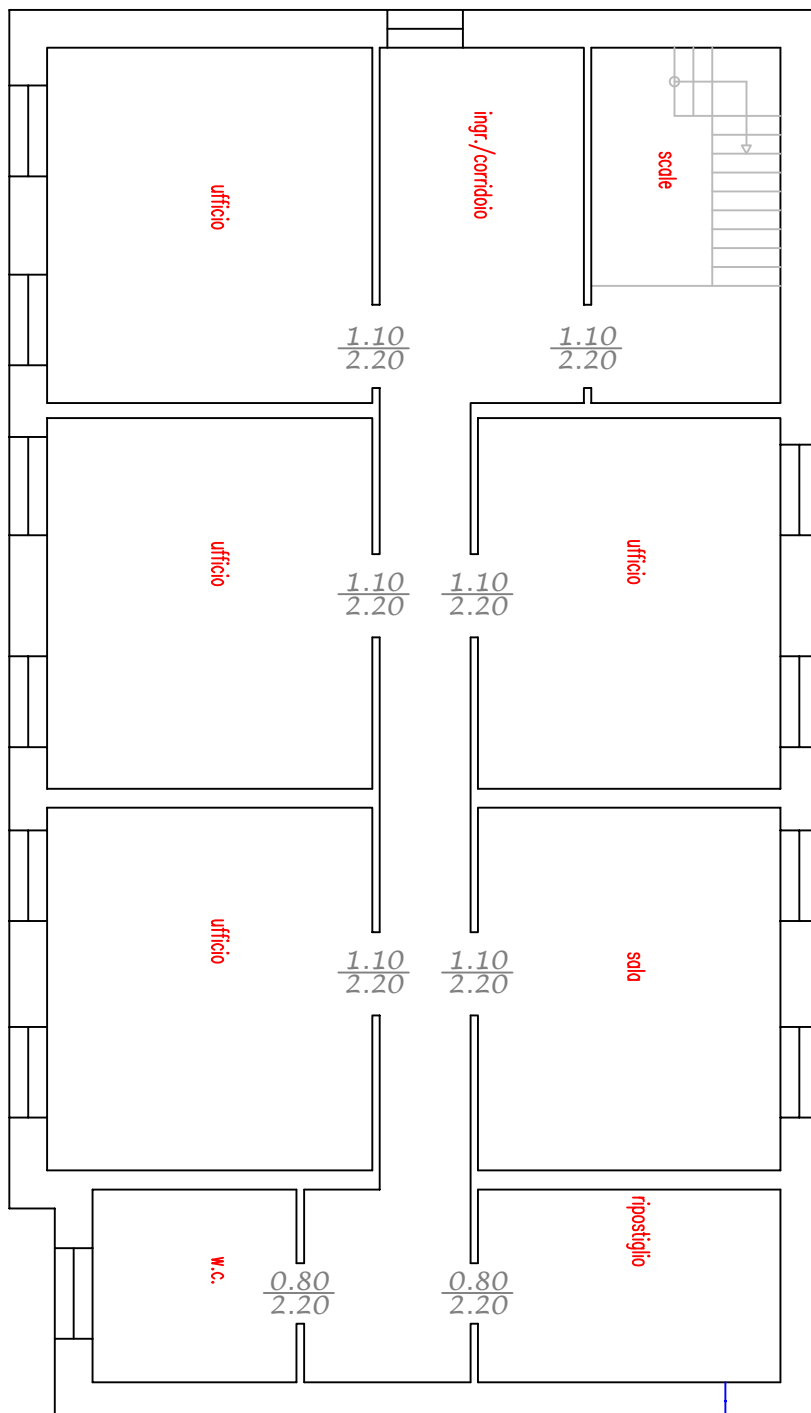
ANPOLAGRAFE

Superfici Utile NETTA ANAGRAFE = 169,77 mq



POLIZIA MUNICIPALE

Superfici Utile NETTA VIGILI URBANI = 148,50 mq



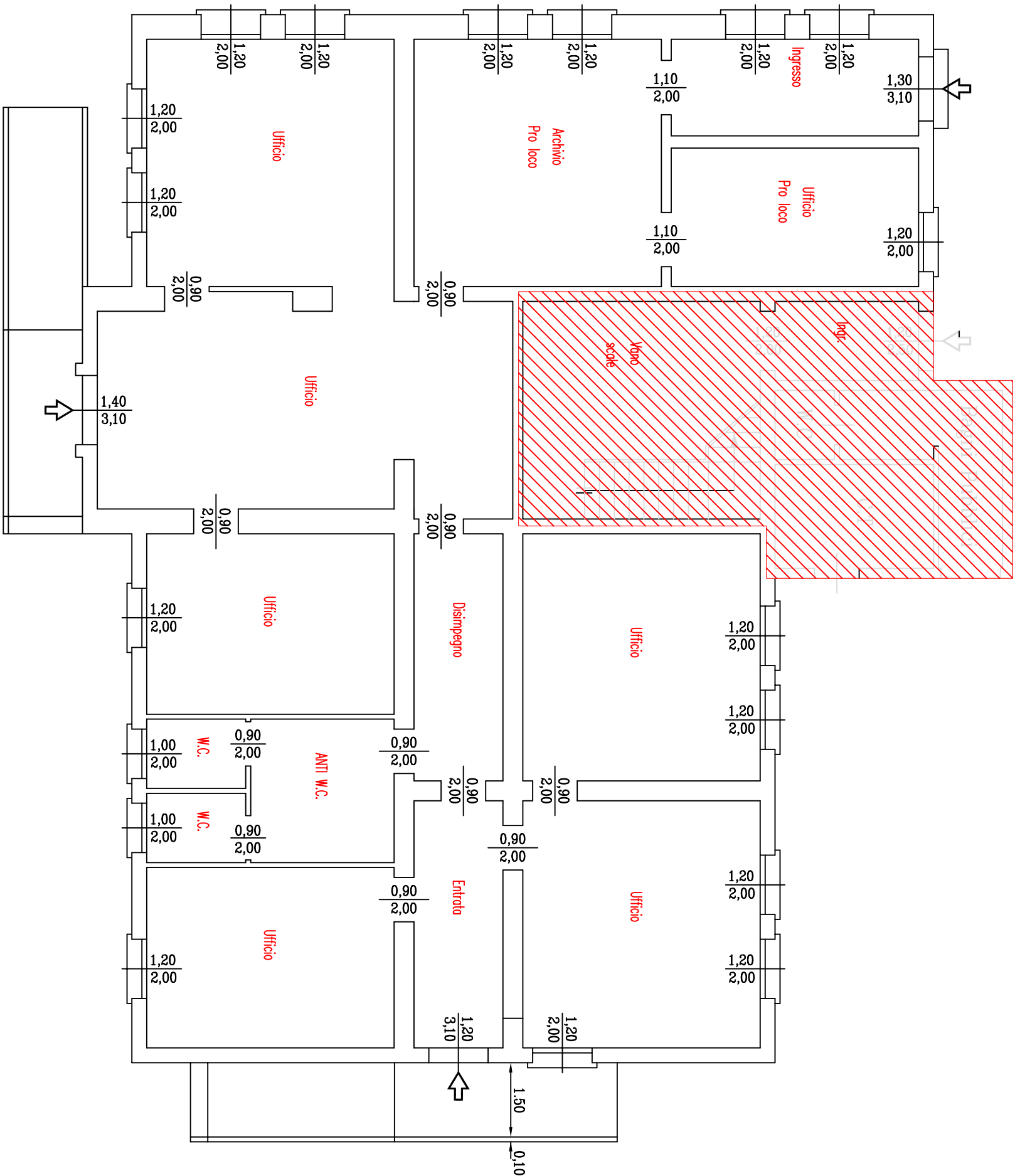
UFFICIO GAC - PRO LOCO - UFFICIO I.A.T.

PIANTA PIANO TERRA

SUP. NETTA da pulire GAC = 27,26 mq.

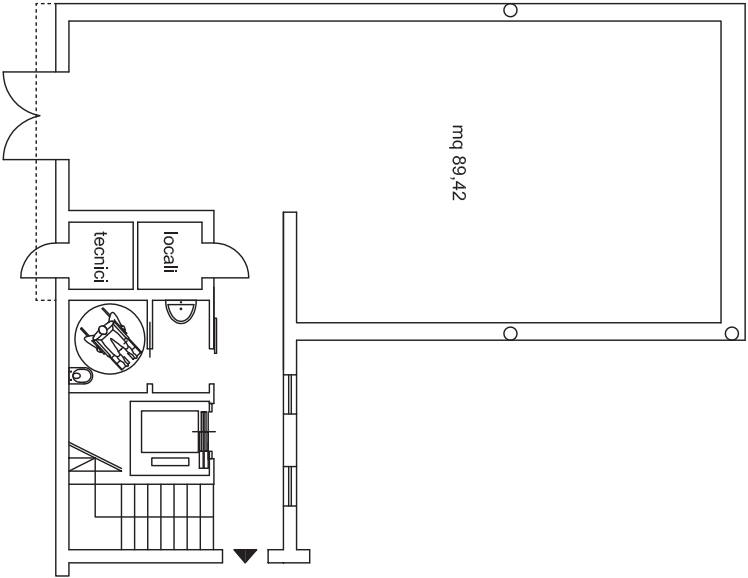
SUP. NETTA da pulire Pro-Loco = 142,26 mq.

SUPERFICIE TOTALE NETTA DA PULIRE = 169,52 mq.

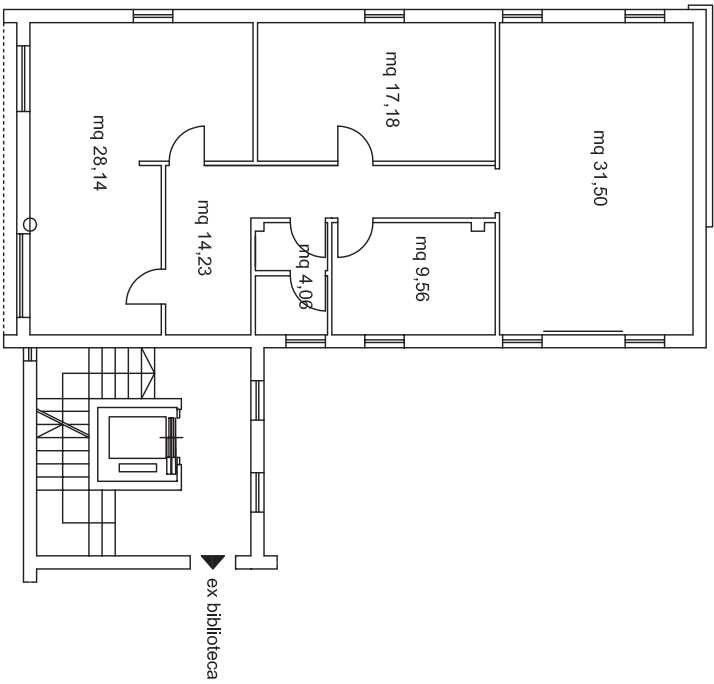


NUOVO UFFICIO TECNICO

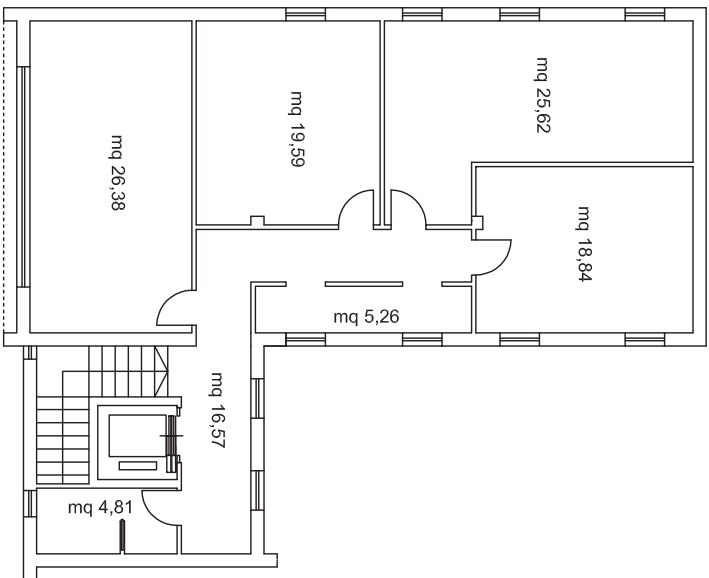
terra



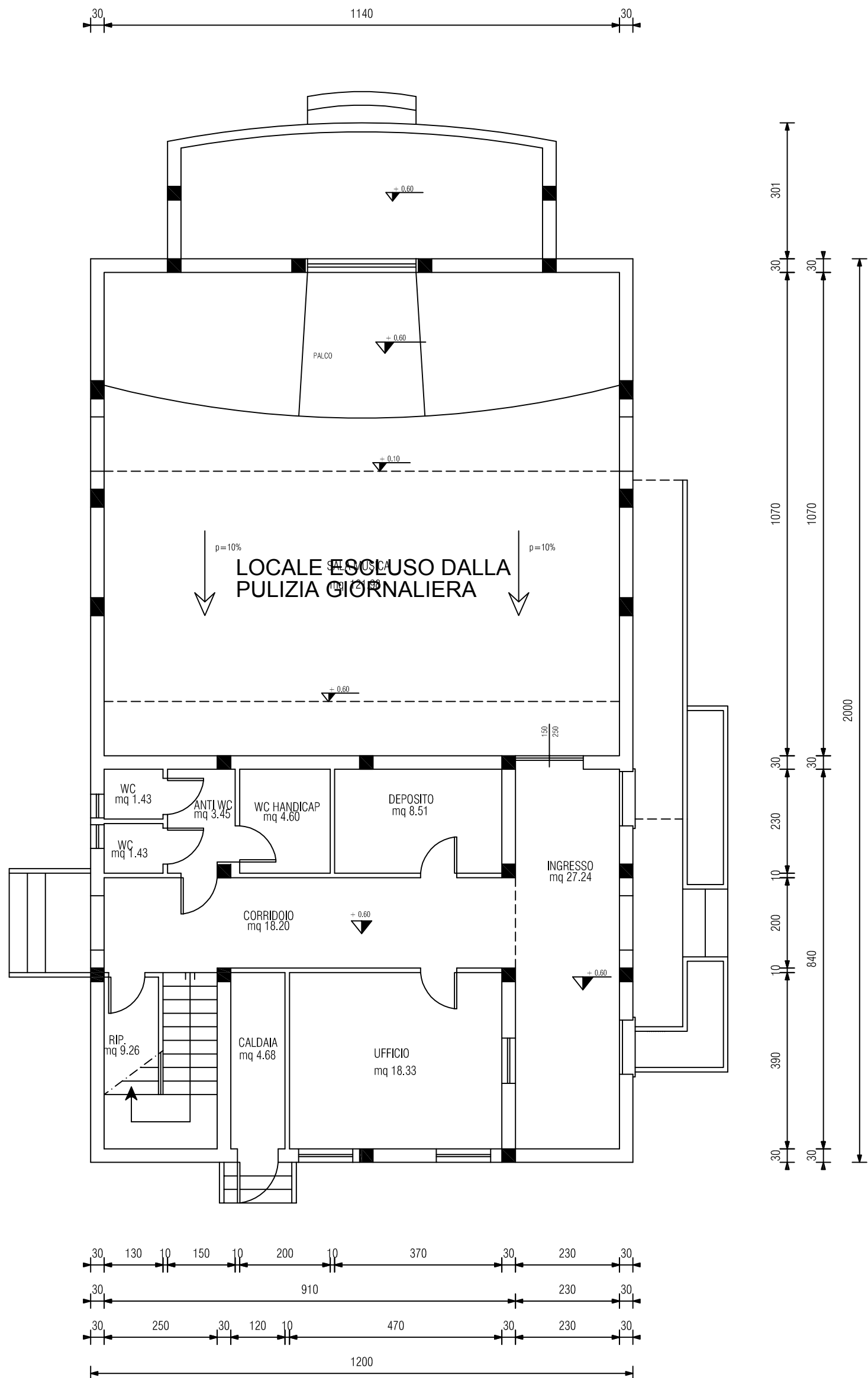
primo



secondo





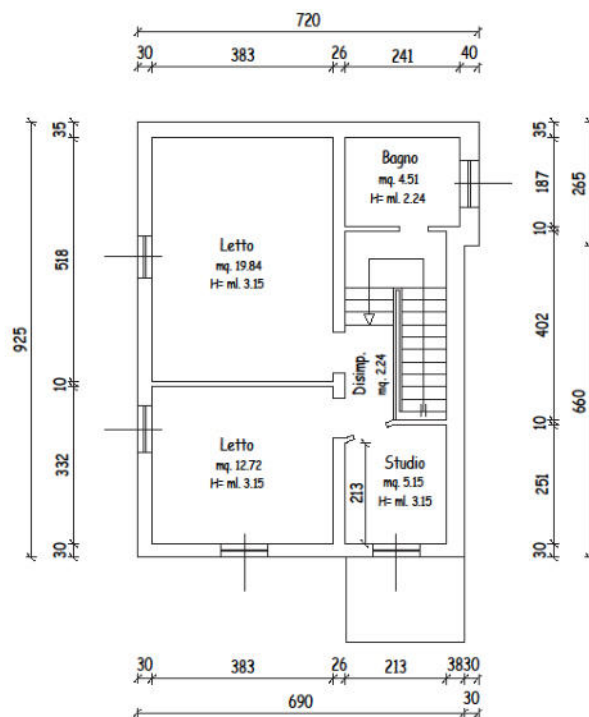


The architectural floor plan depicts a school building with a complex layout. The main entrance, labeled 'INGRESSO/ACCOGLIENZA', is at the top center, leading into a large 'PORTICO' (covered walkway) on the left. To the right of the entrance is a long corridor with several rooms: 'SERVIZI IGIENICI MASCHI' and 'SERVIZI IGIENICI FEMMINE', both with heights of 2.40m and areas of 12.22m² and 13.20m² respectively. Below these are a 'BAGNO ASSISTITO' (4.88m², 2.40m high), a 'WC ADDETTI' (2.95m², 2.40m high), and an 'ADETTI' room (3.89m², 2.40m high). A 'DEPOSITO' (11.54m², 2.57m high) is located at the bottom right. The central area features a large 'MENSE' (dining hall) with an area of 137.29m² and a height of 2.9m. To the right of the dining hall is a 'VIVANDE' (catering) area (4.08m², 2.57m high). The bottom left shows an 'ARRIVO DERRATE' (waste arrival) area (19.19m², 3.00m high). The plan also includes an 'ORTO DIDATTICO' (educational garden) and a 'DEPOSITO ORTO DIDATTICO' (educational garden deposit) at the bottom. The building is surrounded by a 'PORTICO' on the left and a 'PORTICO D'INGRESSO' at the top. The plan includes various dimensions, room numbers, and a scale bar.

[illegible]

PROGETTO DEFINITIVO-ESECUTIVO																					
<div><div>COMUNE DI PORTO TOLLE</div><div><div>PTO 2017</div></div></div>																					
CUP 187B16000660004																					
REALIZZAZIONE MENSA SCOLASTICA SCUOLE PRIMARIE di PORTO TOLLE Via U. Giordano																					
<div></div>																					
Responsabile del procedimento Progettazione		Ing. Andrea FORTINI																			
Servizio tecnico		Gest. Impianti BENTAGLIA Gest. Impianti BENTAGLIA AS2 - Azienda Servizi Sperimentali S.r.l. Via S. Maria Goretti, 4 - 45010 PORTO TOLLE (RA) Tel. 0545/200000 - Fax 0545/200000 - E-mail: info@as2ptt.it																			
Documento:		TITOLO DELL'INTERVENTO:																			
DOC. B-01		PIANTA PIANO TERRA																			
<table><tr><td>REV.</td><td>DATA PRESSIONE</td><td>DESCRIZIONE</td><td>REDAZIONE</td><td>CONTROLLATO</td><td>APPROVATO</td></tr><tr><td>0</td><td>12/2016</td><td>PROGETTO DI ATTIVITA' TECNICO ED ECONOMICA</td><td>Ing. tecnico AS2</td><td>Ing. S. BALBIN</td><td>Gian. M. BIZZAGA</td></tr><tr><td>0</td><td>05/2017</td><td>PROGETTO DEFINITIVO-ESECUTIVO</td><td>Arch. Balbin AS2</td><td>U.T.C.</td><td>Ing. M. FORNISI</td></tr></table>				REV.	DATA PRESSIONE	DESCRIZIONE	REDAZIONE	CONTROLLATO	APPROVATO	0	12/2016	PROGETTO DI ATTIVITA' TECNICO ED ECONOMICA	Ing. tecnico AS2	Ing. S. BALBIN	Gian. M. BIZZAGA	0	05/2017	PROGETTO DEFINITIVO-ESECUTIVO	Arch. Balbin AS2	U.T.C.	Ing. M. FORNISI
REV.	DATA PRESSIONE	DESCRIZIONE	REDAZIONE	CONTROLLATO	APPROVATO																
0	12/2016	PROGETTO DI ATTIVITA' TECNICO ED ECONOMICA	Ing. tecnico AS2	Ing. S. BALBIN	Gian. M. BIZZAGA																
0	05/2017	PROGETTO DEFINITIVO-ESECUTIVO	Arch. Balbin AS2	U.T.C.	Ing. M. FORNISI																

The floor plan illustrates the layout of the Museo del Risorgimento. The main entrance (INGRESSO) is located in the center, leading to a large hall (MUSEO) on the left and a smaller hall (MUSEO) on the right. A central staircase is situated between the two main halls. To the right of the entrance is an area labeled 'ANTIBAGNO' and 'WC'. The plan includes numerous dimensions for room sizes and corridor widths, as well as numbered circles (1-10) indicating specific points of interest or structural elements. The overall dimensions of the building are 1435 units by 1615 units.



2270

SALA POLIVALENTE
RIUNIONI/CONFERENZE/ESPOSIZIONI/GRUPPI
54,43MQ
SI 9,80MA 2 SK/8

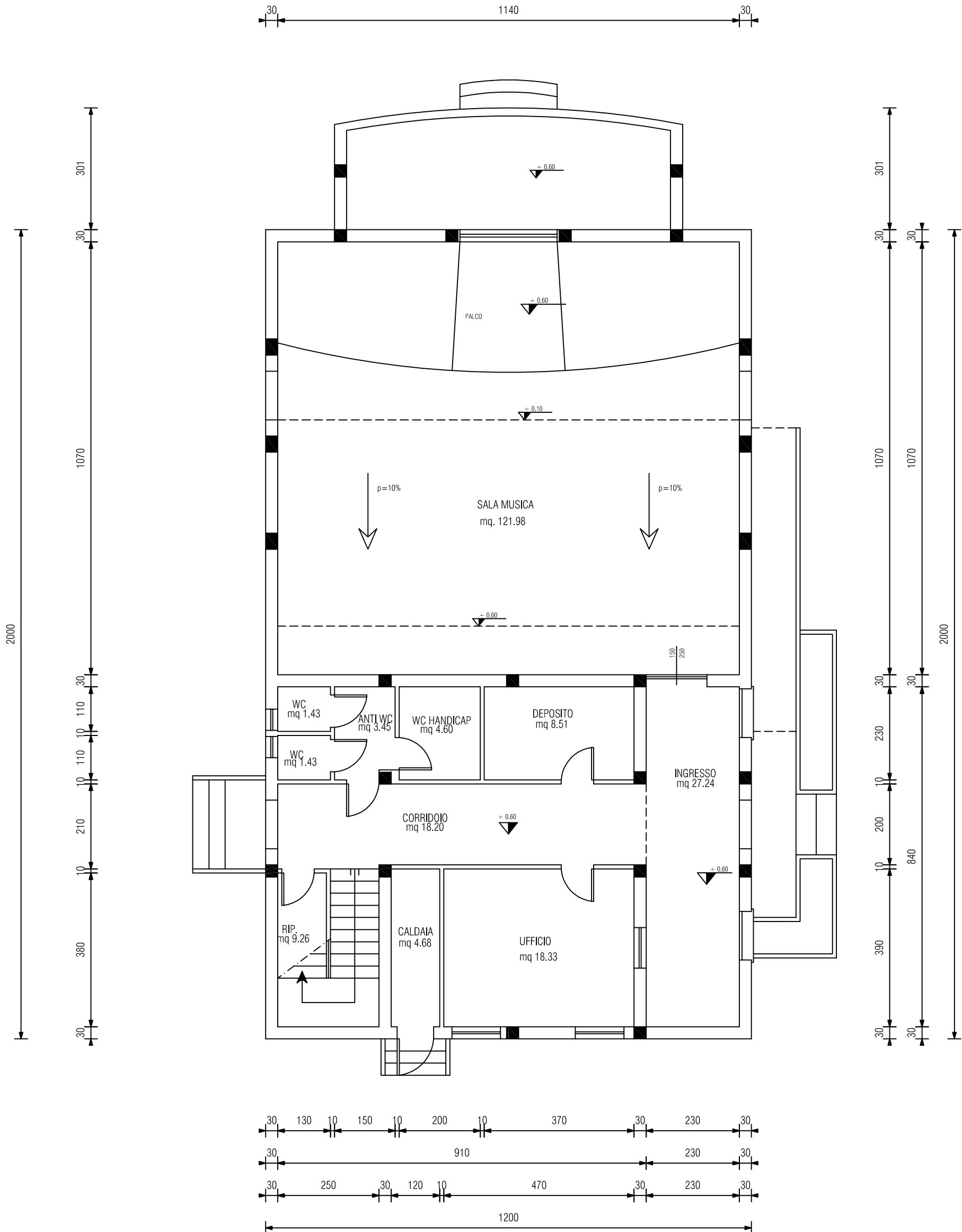
DISIMPEGNO
8,89MG

B

SALA DELLA MUSICA - solo il locale "SALA MUSICA"

PIANTA PIANO TERRA SCALA 1:100

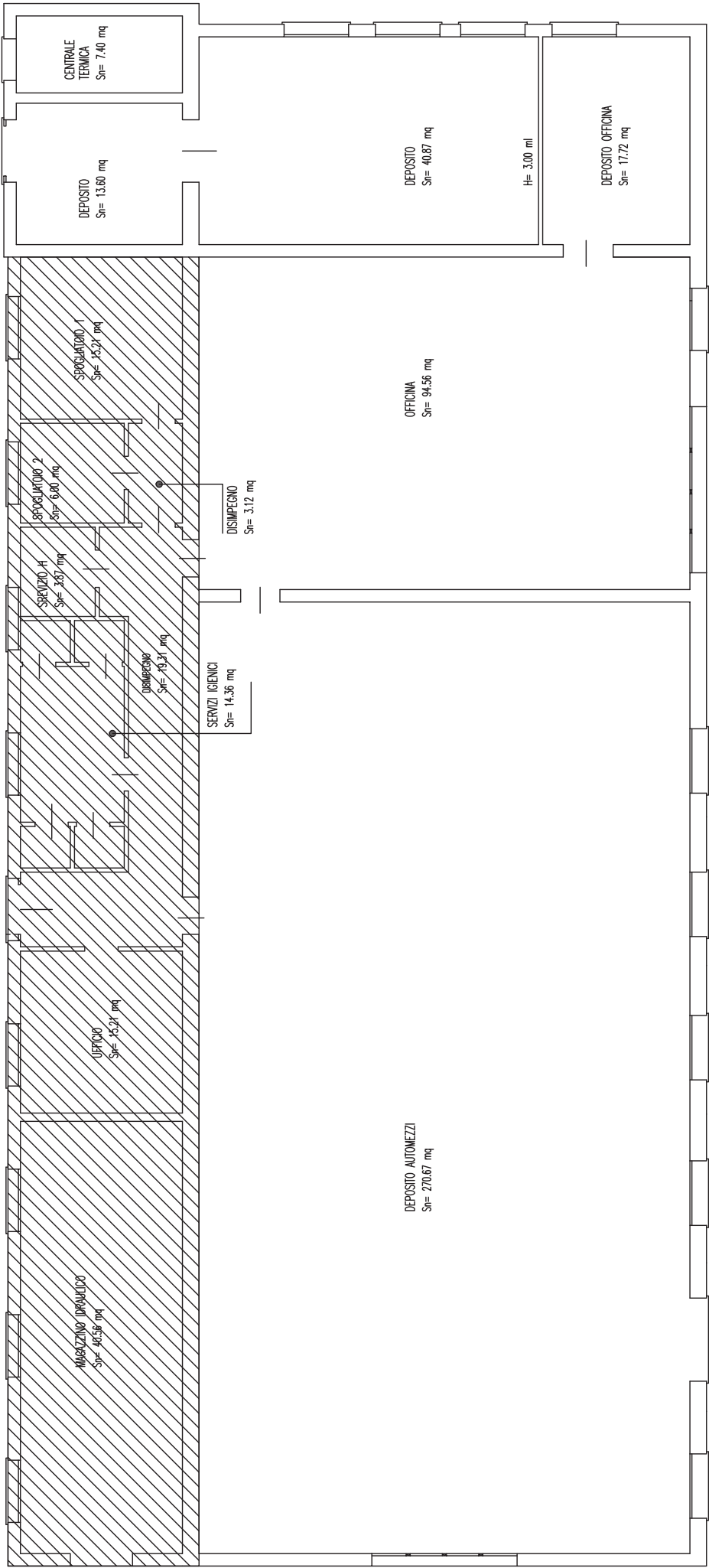
MQ = 219,11



EX FEDERICA EDIFICIO A

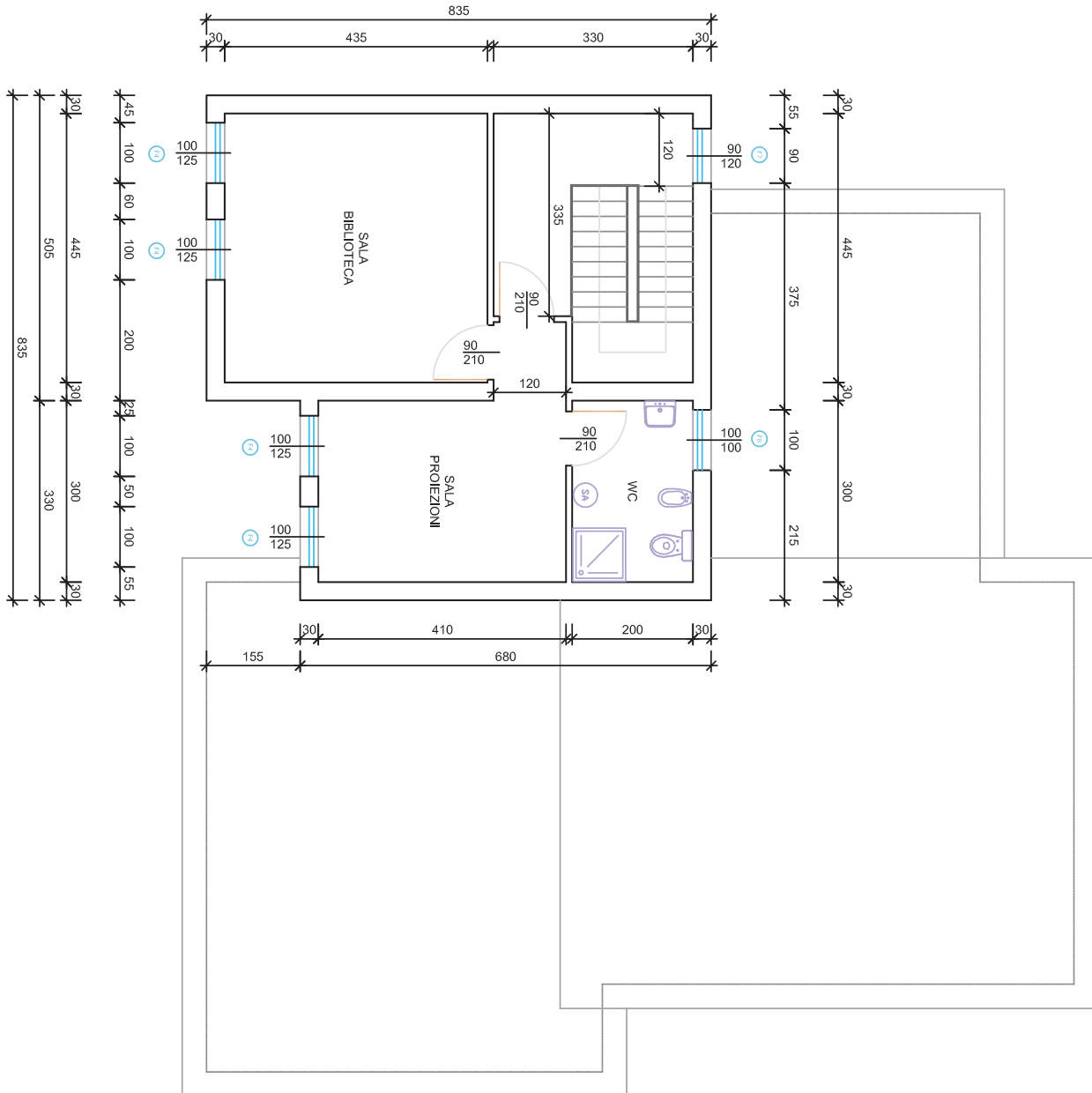
COMUNE DI PORTO TOLLE PROT. N. 0012783 DEL 12-07-2022 partenza

solo i locali evidenziati con il retino



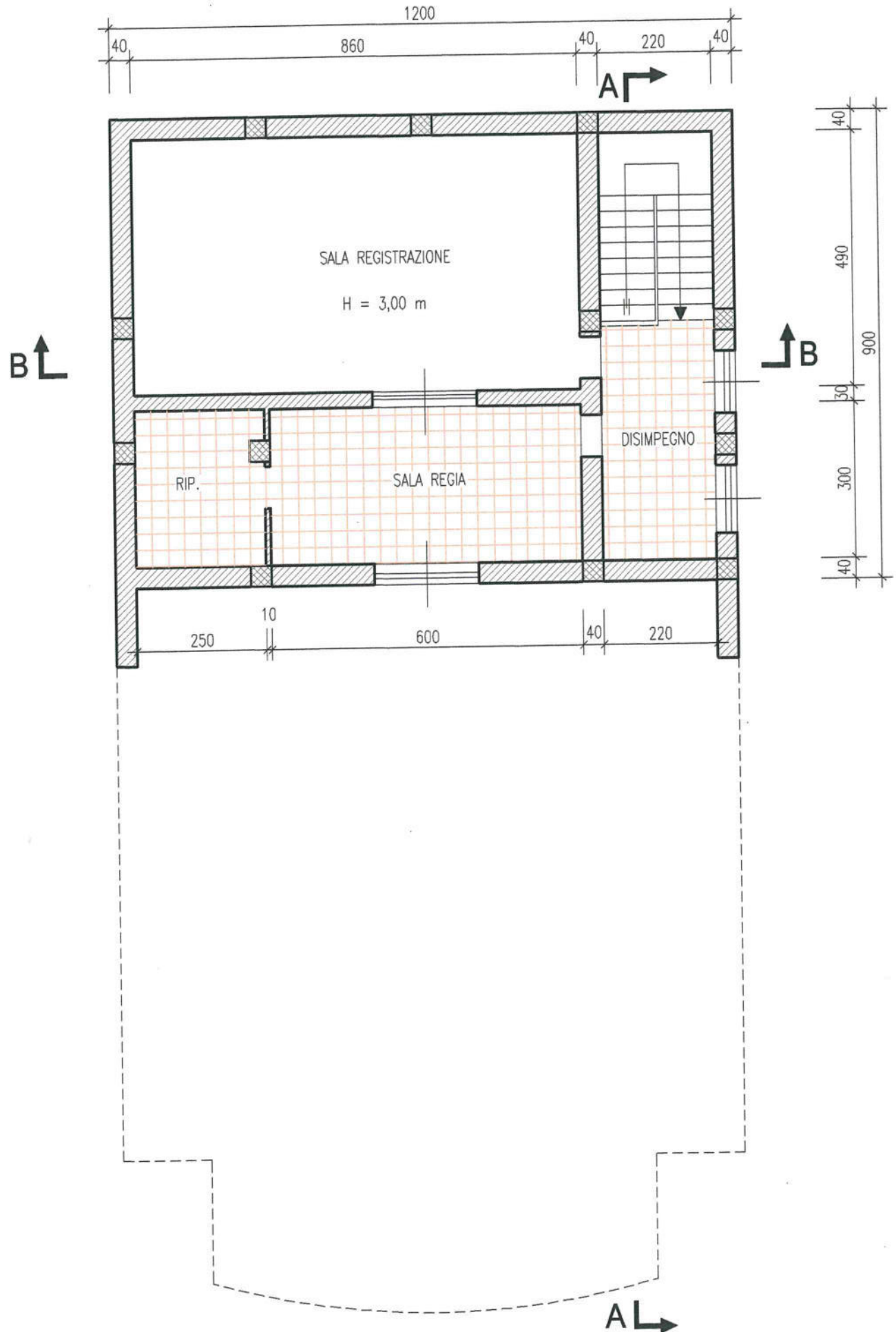
MUSEO DELLA PESCA P.P.

STATO DI PROGETTO
PIANO PRIMO - scala 1:100

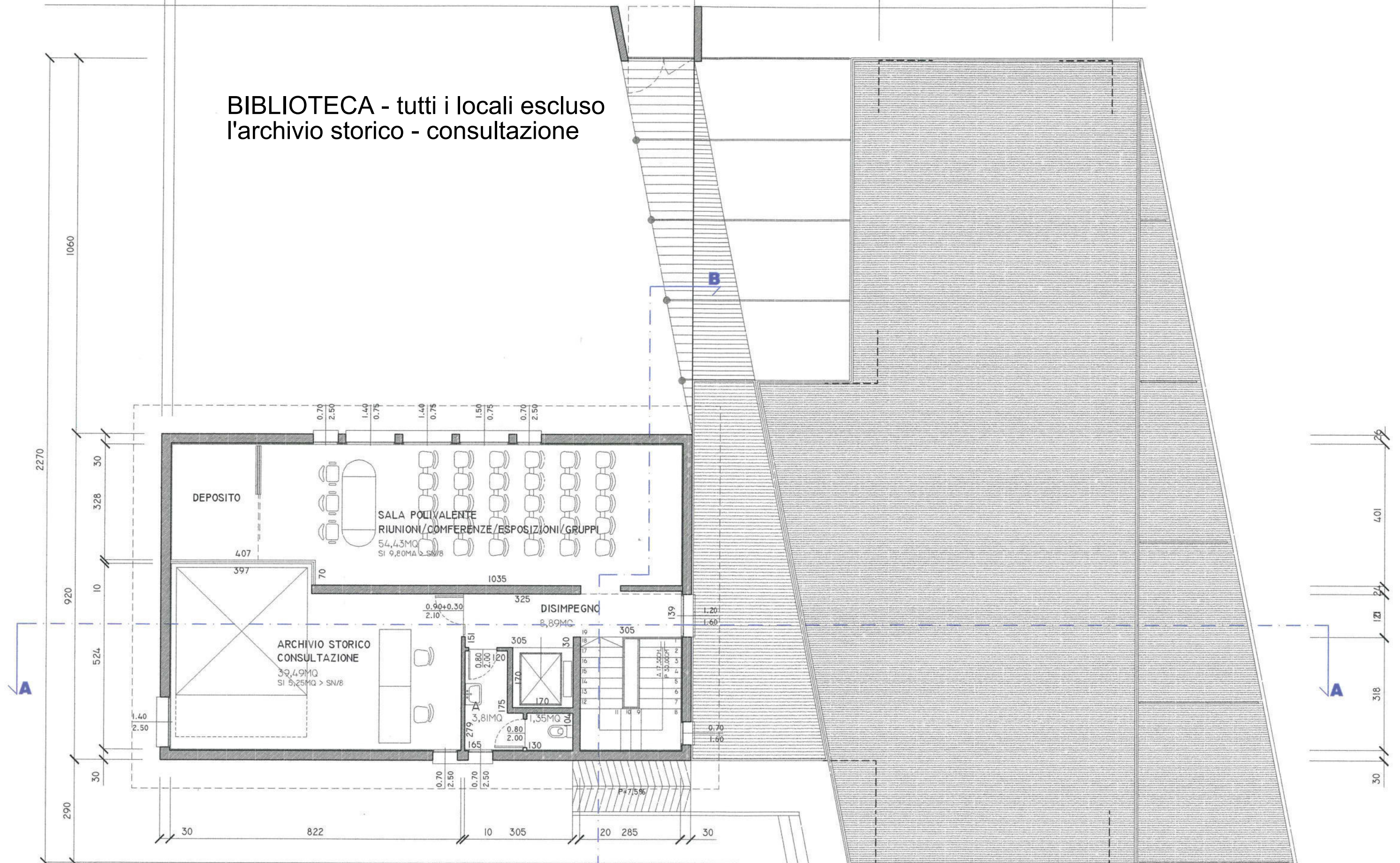


SALA DELLA MUSICA P.P.

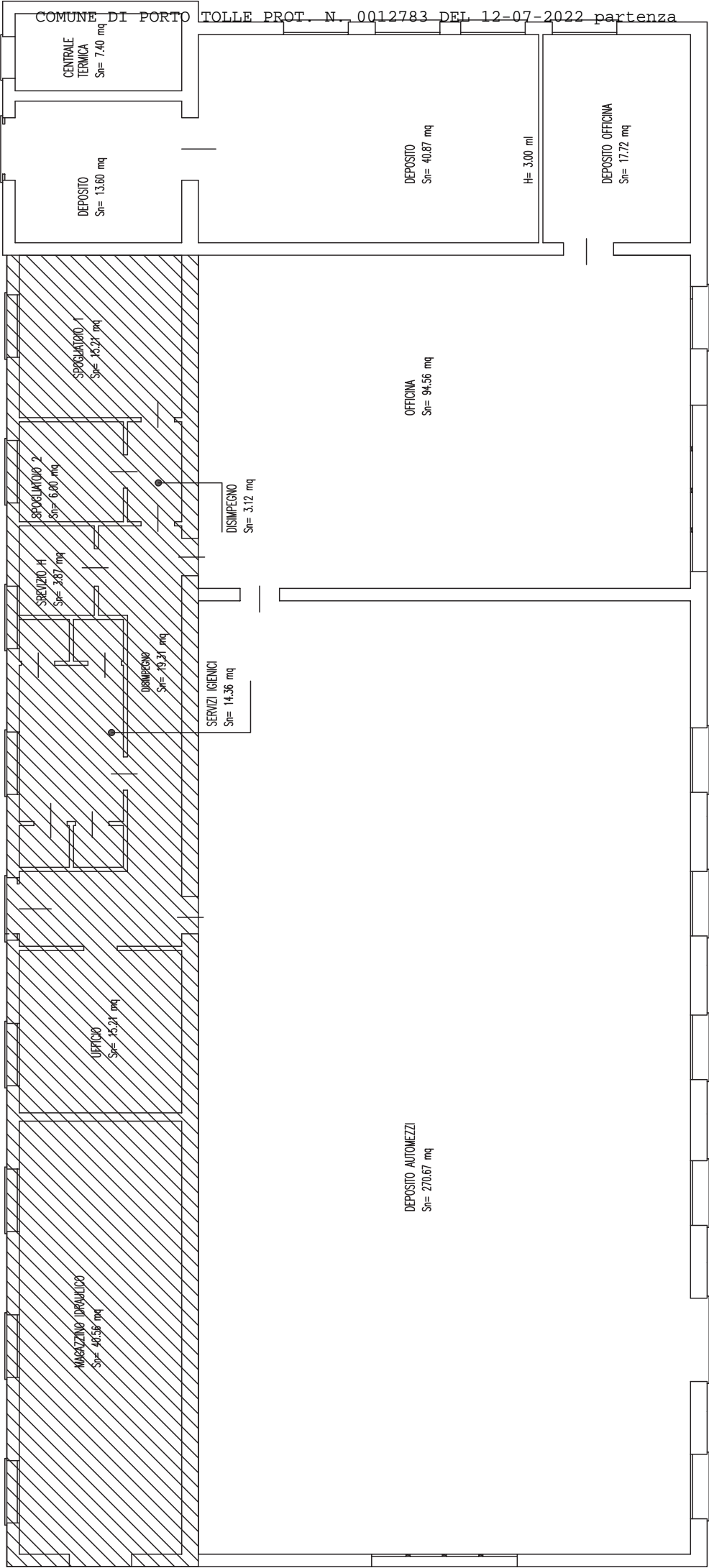
Piano Primo SCALA 1:100



BIBLIOTECA - tutti i locali escluso
l'archivio storico - consultazione

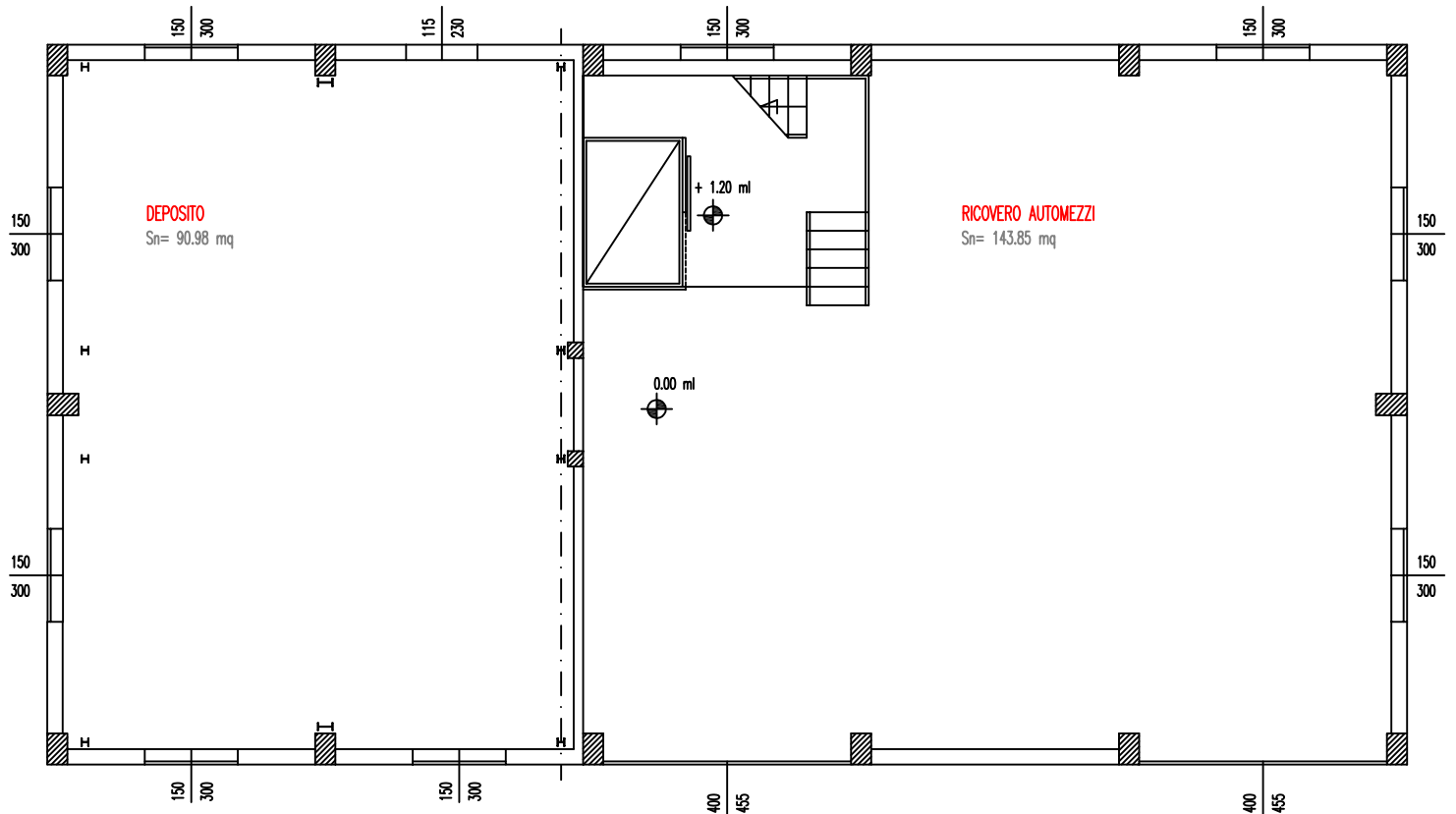


PIANTA PIANO PRIMO
scala 1:100



PIANTA PIANO TERRA

SUPERFICIE NETTA EDIFICIO "B" – EX FEDERICA = 234,83 mq.



SUPERFICIE TOTALE NETTA DA PULIRE = 325,81 mq.

PIANTA PIANO RIALZATO

SUPERFICIE NETTA EDIFICIO "B" – EX FEDERICA = 90,98 mq.

